



Florida Courts E-Filing Authority Board

ePortal Capacity Report



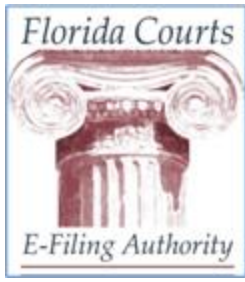
Statement of Work Capacity Requirements

- 3.1.2.1 Technical Requirements - Architecture Page 12
 - “Be designed to support 2,000 concurrent users upon full implementation. Upon Full implementation the system shall support 100 filings per minute on average.”
- 3.1.2.4 Technical Requirements – Database Design Page 15
 - “Application database physical design must calculate storage requirements to handle 5,000,000 Case Filings per year for 5 years.”
- 3.1.5 System Performance Page 18
 - System availability – The Portal must provide uninterrupted service so an electronic filing may be submitted to the Portal at any time of the day or night, twenty four (24) hours a day seven days a week, except during times of routine maintenance
 - System reliability – overall availability greater than 99 percent excluding scheduled maintenance.
 - Response time per transaction: to be determined by the Authority and FACC
 - System users:
 - must be able to support 2000 users concurrently
 - Scalability to meet future requirements –
 - must be able to support the increase of new users as additional courts begin to use the portal.
 - must be modifiable to support new or changing business

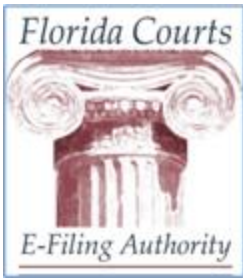


Methodology to Monitor Performance and Capacity

- System Administrators will continuously monitor system performance and system logs using standard toolsets
- Performance and capacity statistics will be reviewed frequently
- In compliance with FCCC internal system operating processes, as system capacity reaches standard thresholds, staff will begin the process of allocating additional resources in compliance with the following SOW requirement as stated in 3.1.2.1 Technical Requirements - Architecture Page 12 :
 - Support vertical scaling via additional processors for all the layers of application.
 - Support horizontal scaling via load-balanced clusters of replicated servers for web and application servers.



Current Status



Portal Usage Statistics

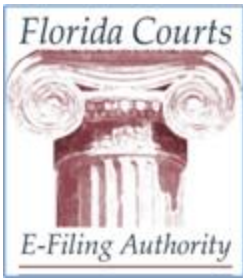
Period: October 2012 – February 2013

Filings		Documents	
Period Total	Avg / Month	Period Total	Avg / Month
383,163	76,633	569,350	113,870

Includes 60 Appellate filings to the Supreme Court in February

Total Registered ePortal Users

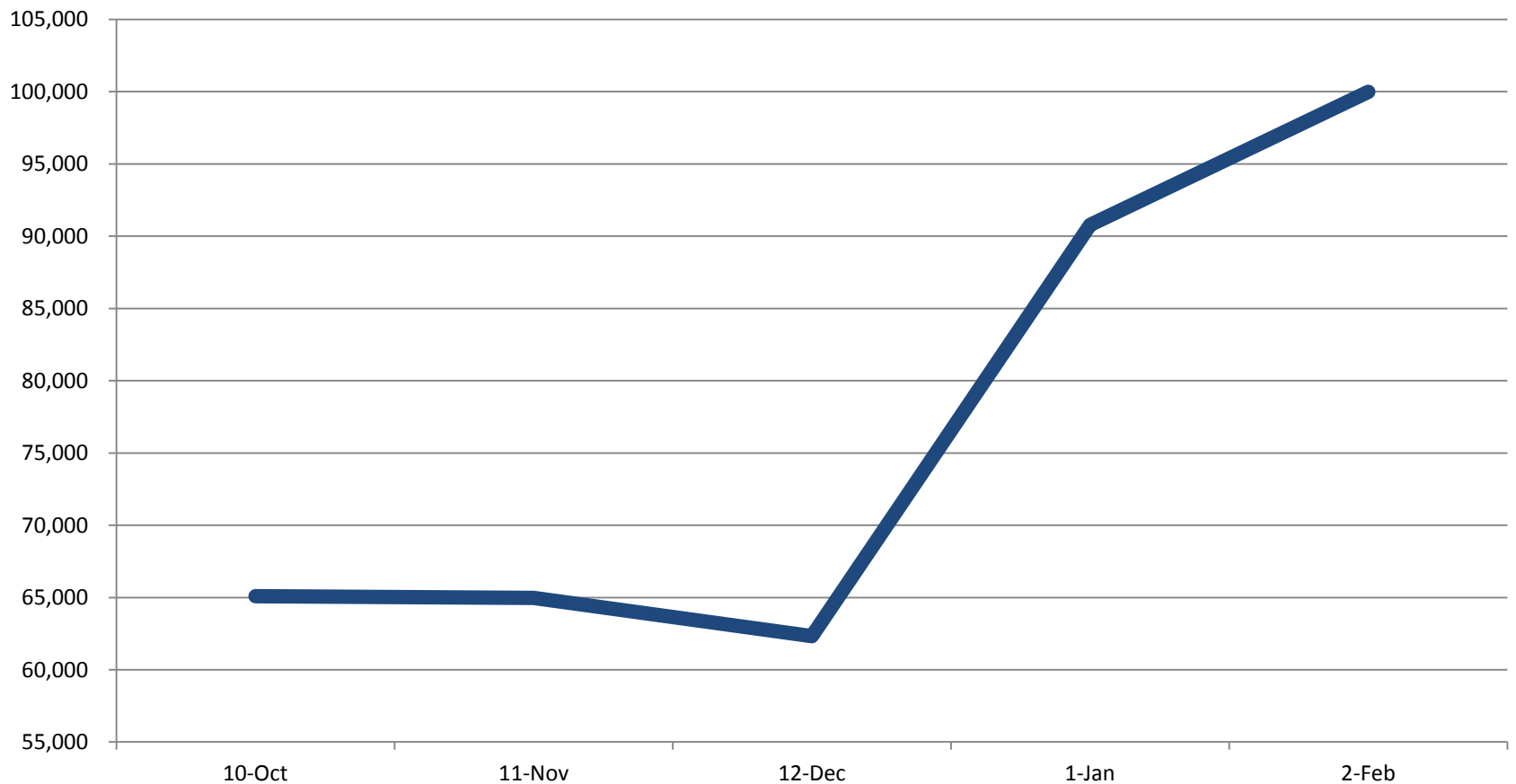
24,381



Portal Usage Statistics

Period: October 2012 – February 2013

Filings by Month

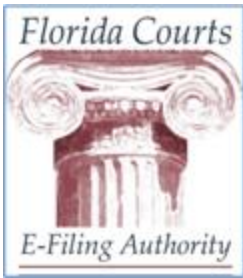


3/12/2013

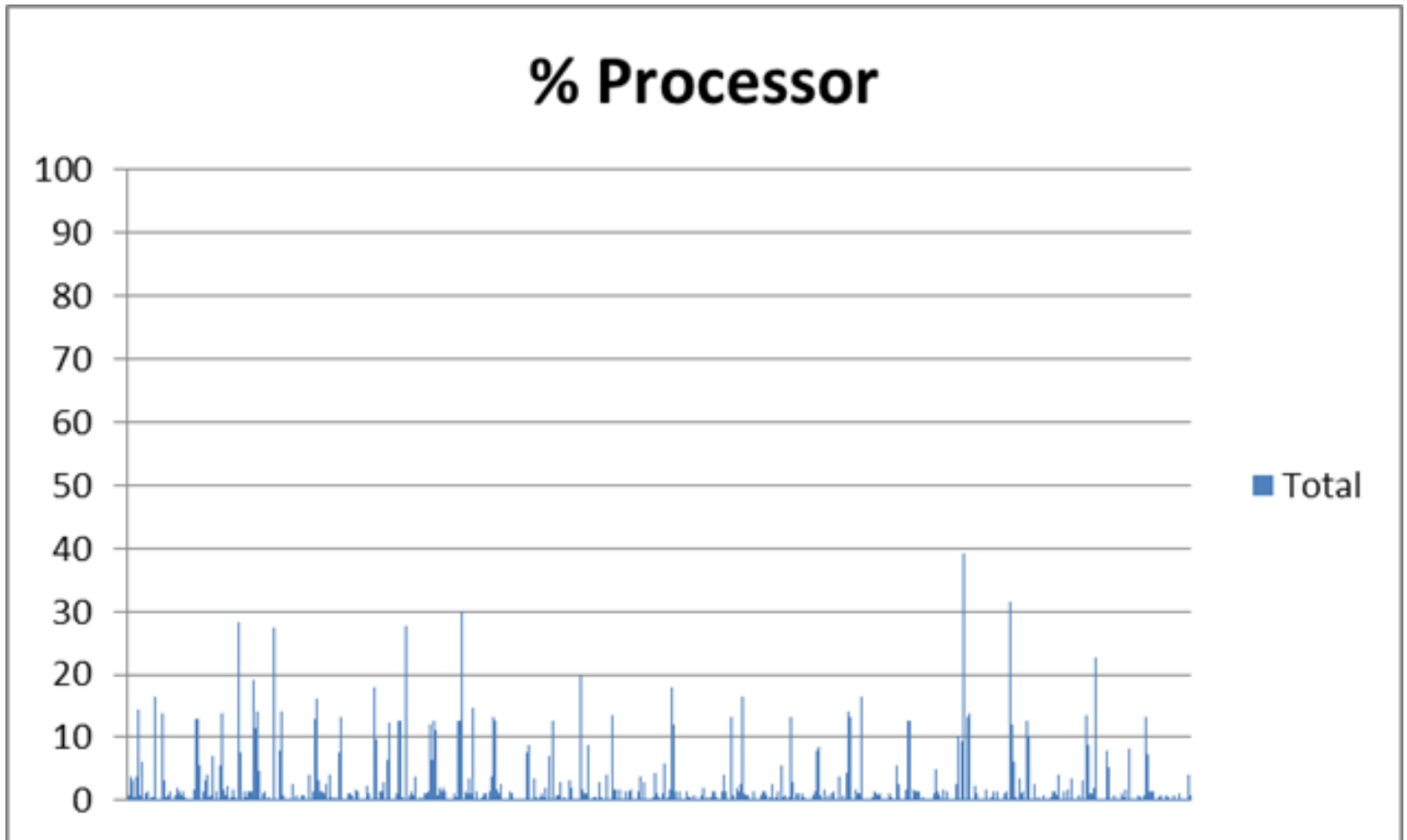


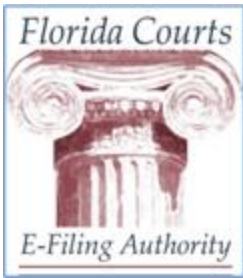
System Monitoring Snapshot

- Statistics are for the ePortal production site over a mid-day, 1 hour span on 3/11/2013.
- During this time period there were:
 - 70,000 Recorded Web site hits
 - 1,413 Filing Transactions
- Utilization is broken down by:
 - Processor
 - Memory
 - Disk I/O
- Statistics are load balanced evenly across 6x web servers and 6x application servers

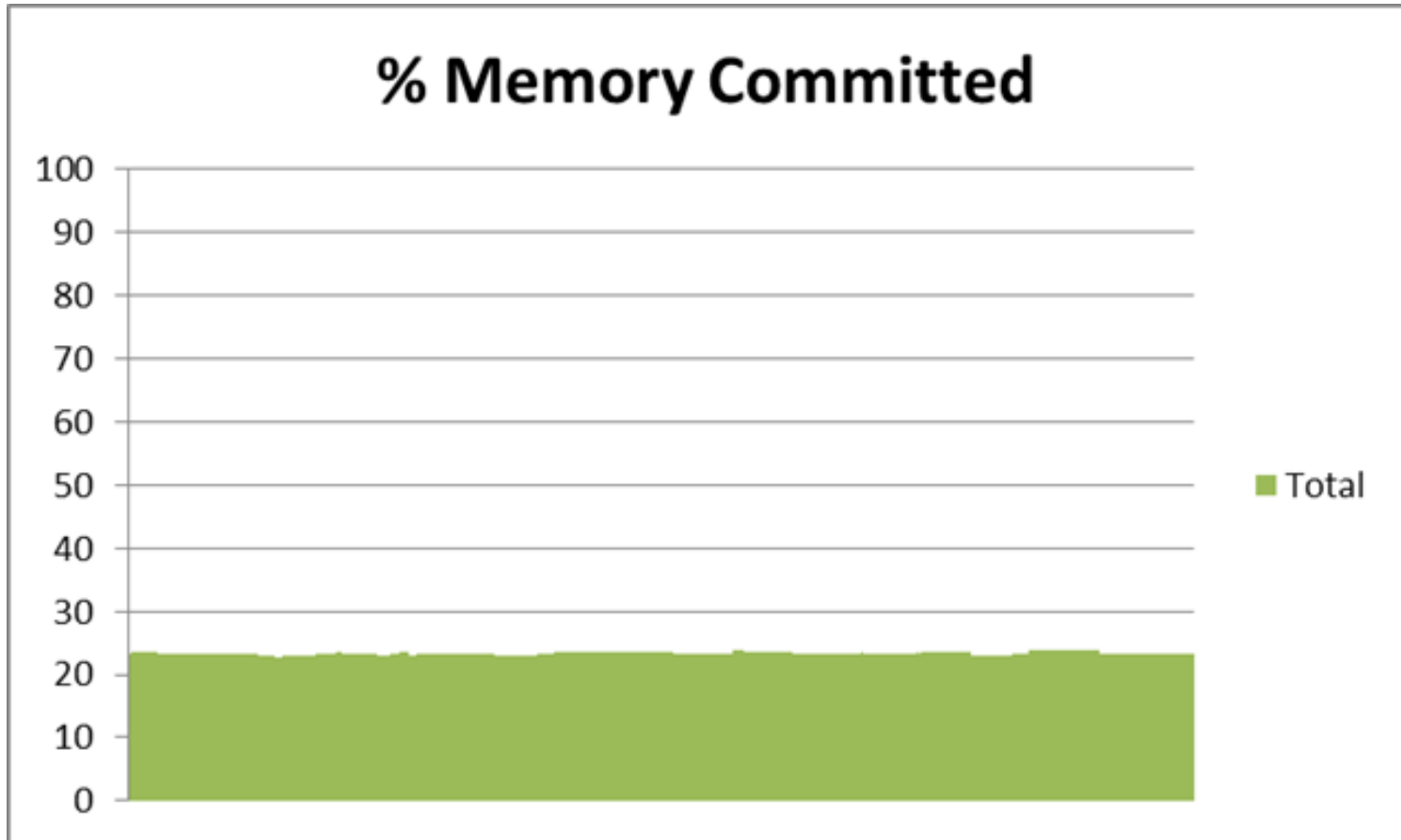


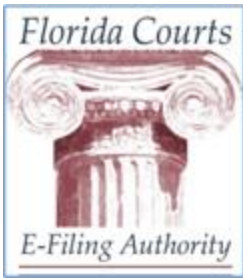
System Monitoring Snapshot



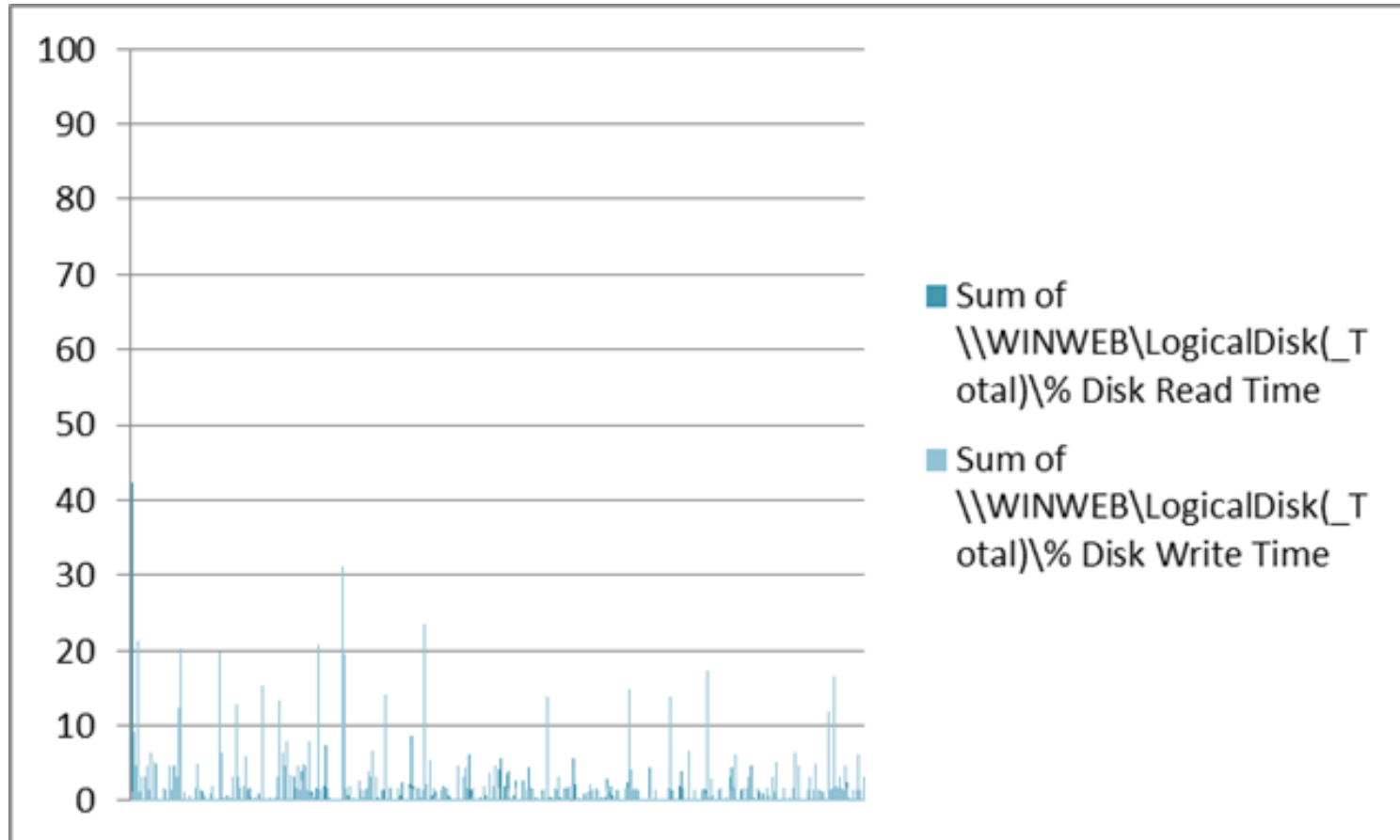


System Monitoring Snapshot





System Monitoring Snapshot





System Monitoring Snapshot

	Web	App	DB
Processor	1%	<1%	10%
Memory	23%	15%	15%
Disk I/O	<1%	<1%	19%

- Web server is seeing less than 1% disk I/O utilization, just over 1% average processor utilization, and 23% memory utilization.
- App server is also less than 1% disk I/O, 1% average processor utilization, and 15% average memory utilization.
- Database server is averaging 10% processor utilization, 19% disk I/O, and 15% memory utilization.



Summary

- ePortal currently operating at 15% capacity
- Based on current statistics, current capacity would be able to handle a peak of 9,420 filings per hour @ 157 per minute @ 100% utilization
- Based on the latest SRS statistics as found on www.flcourts.org, there were 3,967,613 filings for FY 2010-11.
- A peak of 9,420 filings per hour for 8 hours a day for 5 days a week for 50 weeks a year would result in 18,840,000 filings.